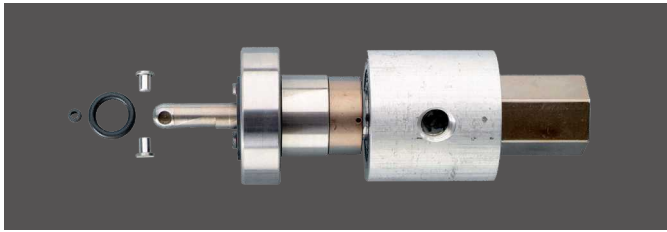


SPARE PARTS

Chuck for portable drilling machines



suitable for	variant	thread/ connection	article no.
KSDV		M14	581 000 017
KSHV		M14	581 000 018
KSDV	replacement chuck	M14	581 000 028
KRDV	replacement chuck	M14	581 600 028

Possible applications

- ▶ Chuck with / without flushing chuck for use in KEIL portable drilling machines.

Flushing chuck for KSDV, KRDV

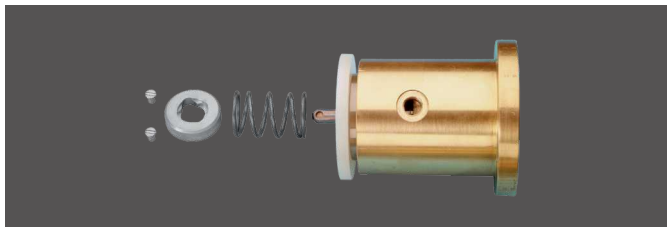


suitable for	article no.
chuck KSDV / KRDV	581 000 012

Possible applications

- ▶ Flushing chuck for undercut units

Chuck for undercut unit HSE

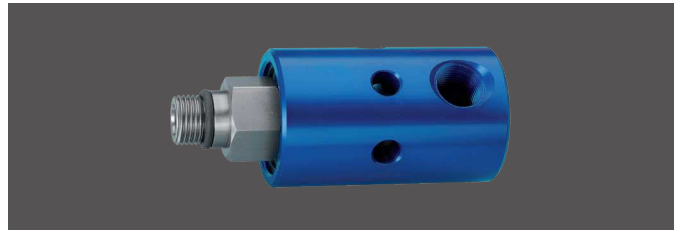


suitable for	thread/ connection	article no.
undercut unit HSE	cone MK1	581 000 020

Possible applications

- ▶ Pneumatic chuck for use in KEIL undercut unit.

Flushing chuck for undercut unit HSE



suitable for	article no.
undercut unit HSE	581 000 026

Possible applications

- ▶ Flushing chuck for undercut unit

Grooved ball bearing

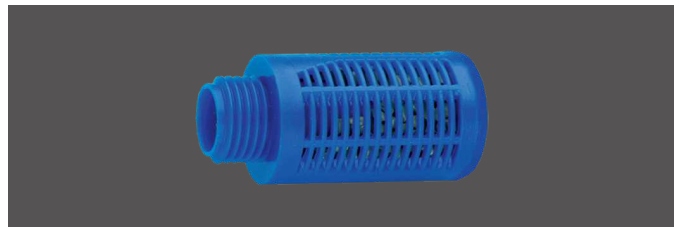


article no.
581 001 320

Possible application

- ▶ Undercut bearing for chuck unit

Silencer



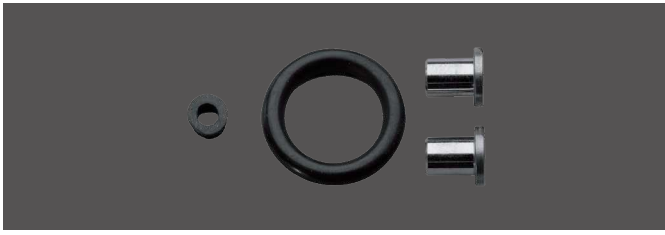
suitable for	article no.
KSDV	532 500 059

Possible applications

- ▶ For venturi nozzles.

INTERESTING FACTS
 ASSEMBLY INSTRUCTIONS
 UNDERCUT ANCHORS
 FIXING DEVICES
 DRILLING TOOLS
 DRILLING TECHNIQUE
 ASSEMBLY AIDS
 GENERAL INFORMATION

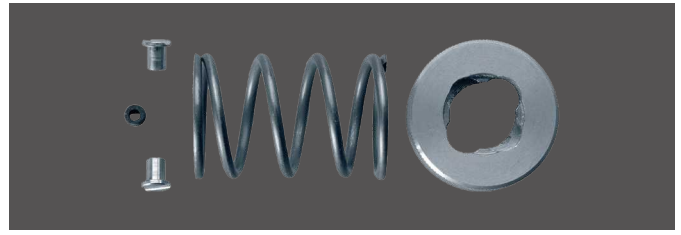
Fastener set 1



article no.
585 900 001

- Possible applications**
- ▶ For KEIL façade drill bits.

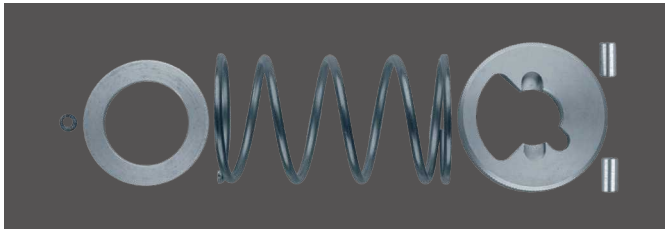
Fastener set 2



article no.
585 900 002

- Possible applications**
- ▶ For KEIL façade drill bits without countersink in chuck P for HSE.

Fastener set 3



article no.
585 900 003

- Possible applications**
- ▶ For KEIL façade drill bits with countersink in chuck P for HSE.

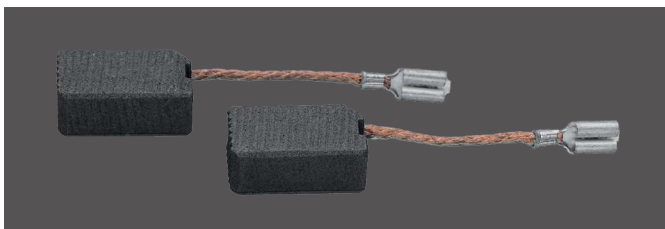
Gasket for vacuum base



suitable for	variant	article no.
KSDV / KSHV / KRDV	735	532 500 108
KSDV / KSHV	600	532 500 110

- Possible applications**
- ▶ Portable machines with vacuum base.
- Note**
- ▶ 735 = default
 - ▶ 600 = inner groove

Carbon brush set



suitable for	Volt	Hertz	article no.
KSDV	230 V	50 Hz	532 500 040
KRDV	230 V	50–60 Hz	532 600 040
KRDV	120 V	60 Hz	532 600 042

- Possible applications**
- ▶ Replacement carbon brushes for portable drilling machines
- Note**
- ▶ Please always state machine type with order.

Museum of Liverpool, Liverpool, GB © Vincent Phillips

